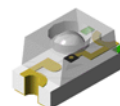


1206 SMD LED 60 degree View Angle

VS 6A78

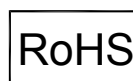
Description

This lens construction of this series is different from other flat type of SMD LED. Within the lens itself, there is an additional lens construction for better focusing of light output. Thus, increase the luminous intensity. The dice used in this series is InGaN material. The advantages of InGaN material are low power consumption and obtaining high luminous intensity. The wavelengths and luminous intensities of this series are grouped under 20mA condition for uniformity.




Applications

- Industrial control systems signal indicator.
- Automotive features
- Front panel indicator
- Status indication



Electronic Optical Characteristics (at 20mA):

Part Number	Emitted Color	λ (nm)		Lens Color	Iv(mcd)		View Angle	VF(v)	
		λ_d	λ_p		Min.	Typ.		Typ.	Max.
VS 6A78	Bluish-green 	505	502	Clear	565	900	60	3.5	3.8

Absolute Maximum Ratings (at Ta=25°C)

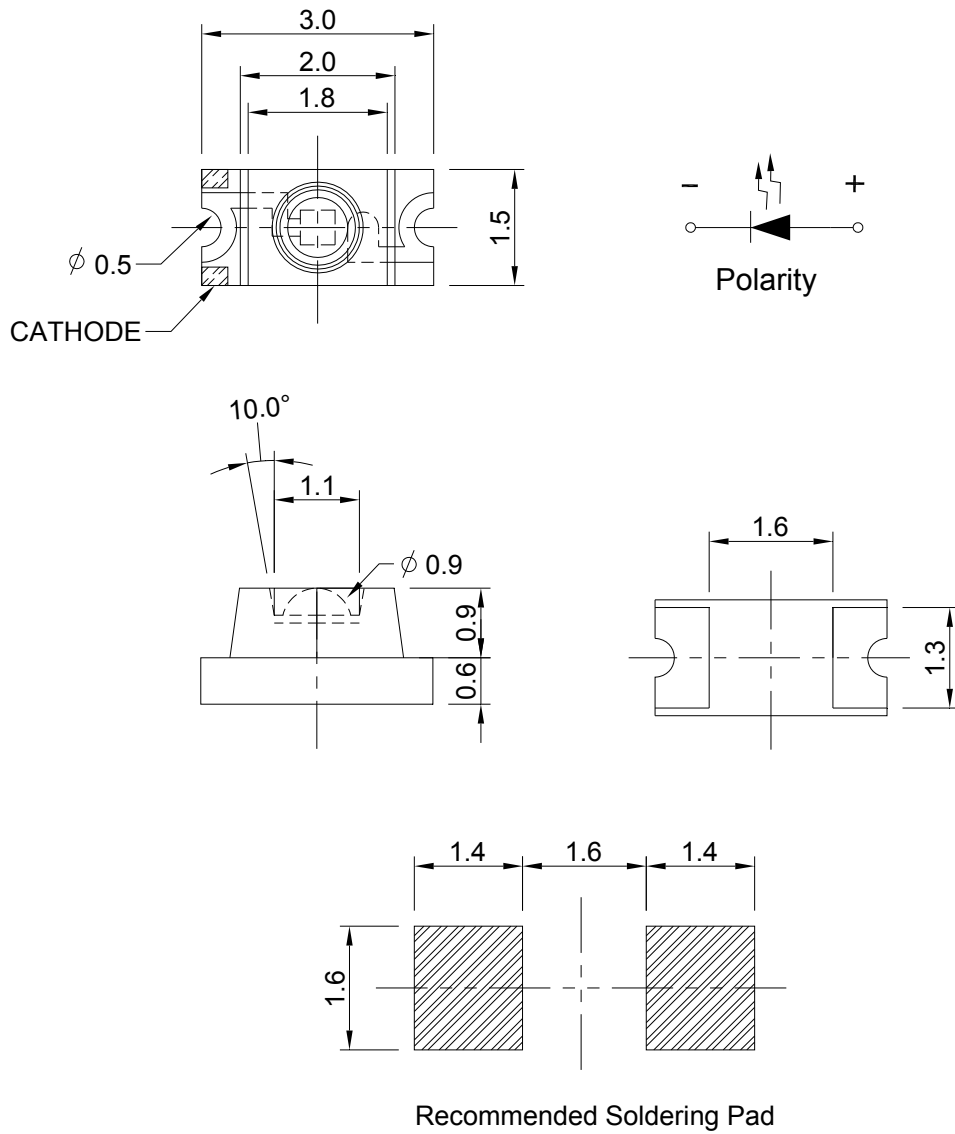
P _D (mW)	I _{FP} (mA)	I _F (mA)	Iron Solder (°C)	I _R (uA)@V _R =5V	Topr(°C)	Tstg(°C)
95	100*	25	350 ± 5 for 3 sec.	50	-40~+85	-40~+100

Note: Please take note the Absolute Maximum Rating values. Any operation beyond the specify ratings in this table will result degradation of LED life-span and may cause LED to fail.

* I_{FP}: Peak Forward Current under 1/10 duty, 1KHz condition

Package Dimension:

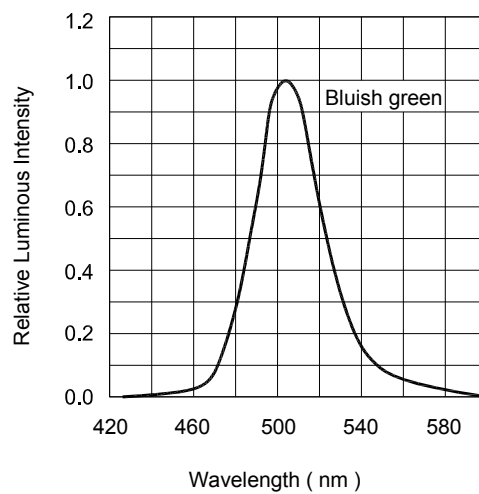
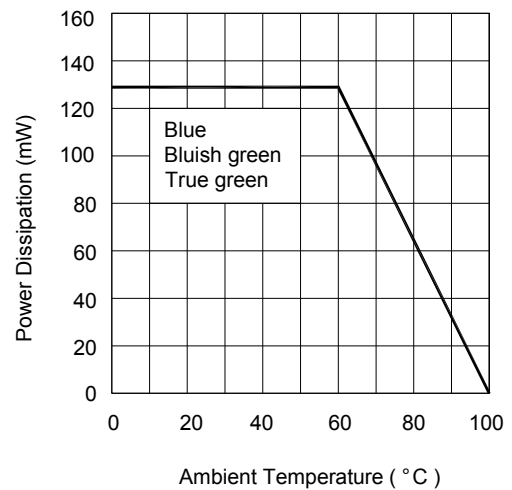
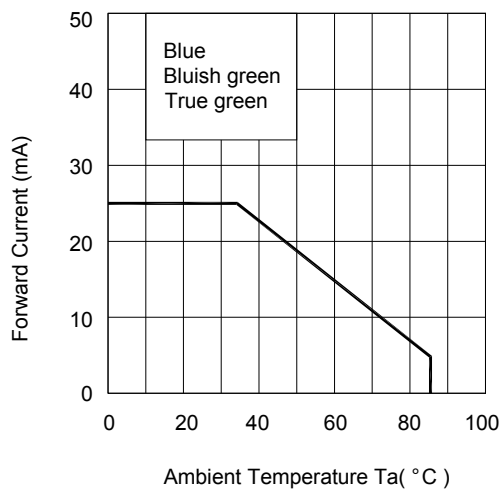
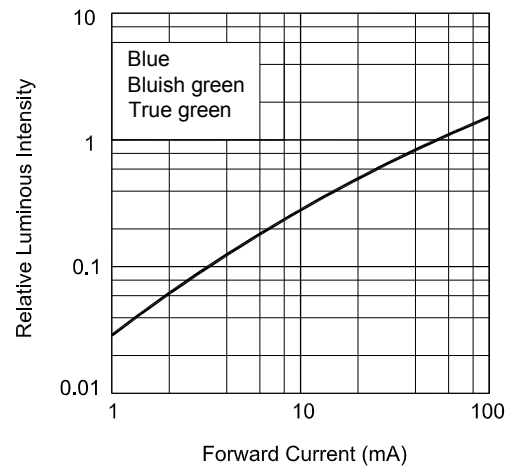
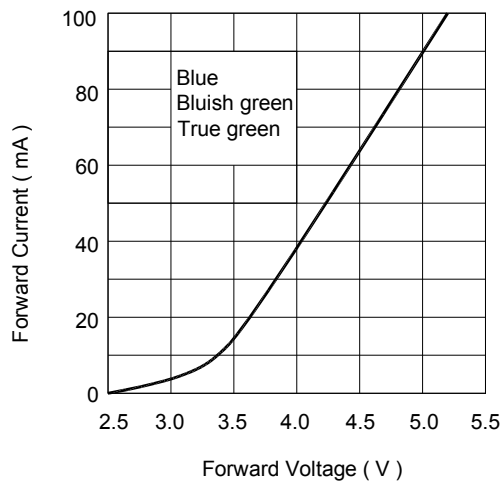
unit:mm



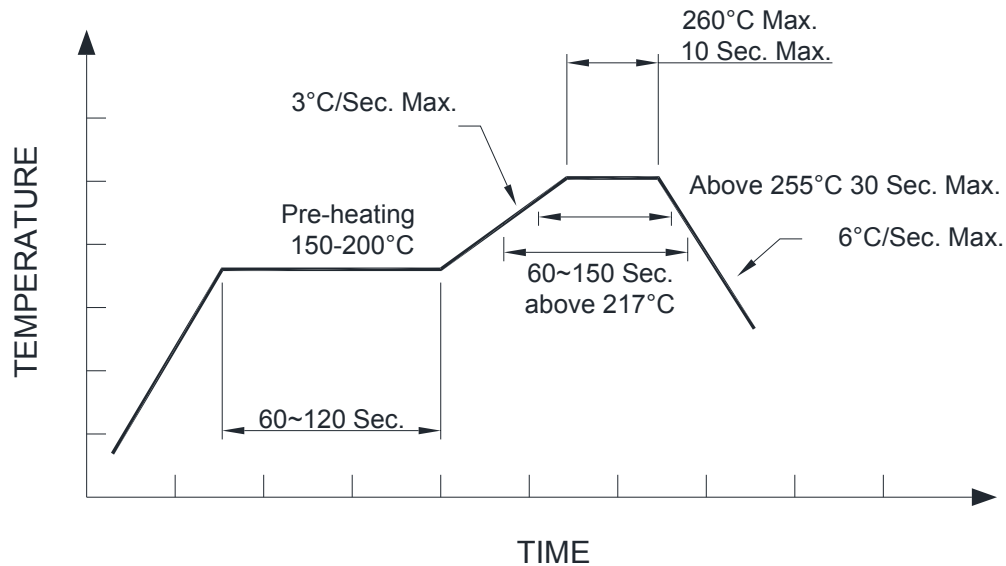
Notes:

1. All dimensions are millimeters.
2. Tolerance is ± 0.2 mm unless otherwise specified.
3. Specifications are subject to change without notice.

Optical Characteristics Curves



Recommended Pb-free re-flow soldering profile:



Note:

All the specifications listed in this data sheet are suitable for general electronic equipment, office equipment and communication devices. Kindly consult Sales Representatives for specific reliabilities request, Forward Voltage, Luminous Intensity, Wavelength, Radiant Power or Viewing Angle.